

## \* NOTE

The IR format of the DVD-C750 is Philips RC6 format.

Attached is an example of the set up process using Pronto(ProntoEdit) or RAV-2000(RAVedit).

Please see instructions.

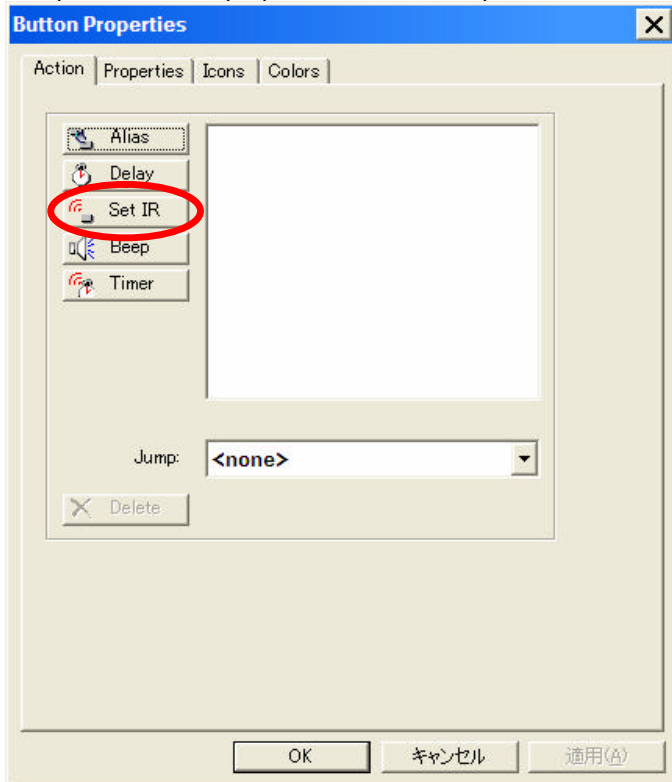
DVD-C750					
Function	Extended I/R(RC6 format)				IR codes for Pronto(ProntoEdit)/RAV-2000(RAVedit)
	Decimal		Hexadecimal		
POWER ON	004	063	04	3F	6000 0000 0000 0001 0004 003f
POWER OFF	004	142	04	8E	6000 0000 0000 0001 0004 008e
DISC RANDOM	004	164	04	A4	6000 0000 0000 0001 0004 00a4
PROGRAM	004	251	04	FB	6000 0000 0000 0001 0004 00fb
PLAY NORMAL	004	165	04	A5	6000 0000 0000 0001 0004 00a5
DISC REPEAT	004	166	04	A6	6000 0000 0000 0001 0004 00a6
REPEAT OFF	004	167	04	A7	6000 0000 0000 0001 0004 00a7
DISC 1	004	179	04	B3	6000 0000 0000 0001 0004 00B3
DISC 2	004	180	04	B4	6000 0000 0000 0001 0004 00B4
DISC 3	004	181	04	B5	6000 0000 0000 0001 0004 00B5
DISC 4	004	182	04	B6	6000 0000 0000 0001 0004 00B6
DISC 5	004	183	04	B7	6000 0000 0000 0001 0004 00B7

## INSTRUCTION

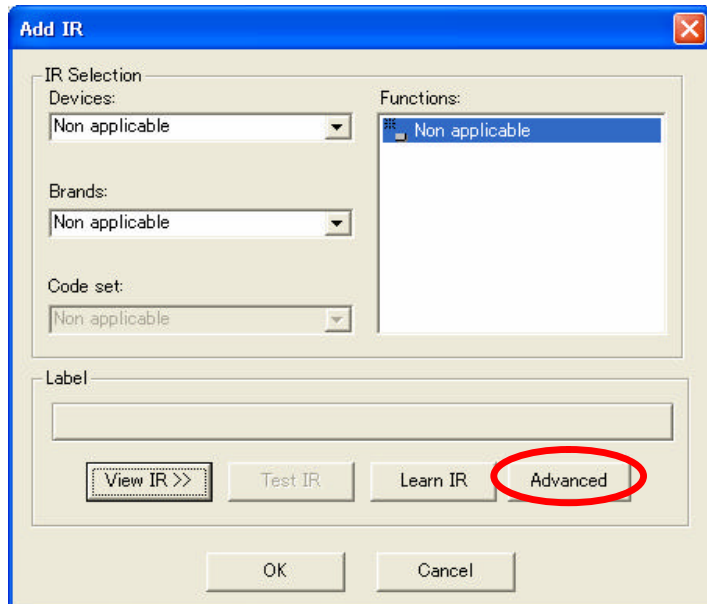
<< For Pronto(TSU-1000/2000/6000) by using ProntoEdit >>

\* NOTE : The following steps are for those who have sufficient experience using ProntoEdit.

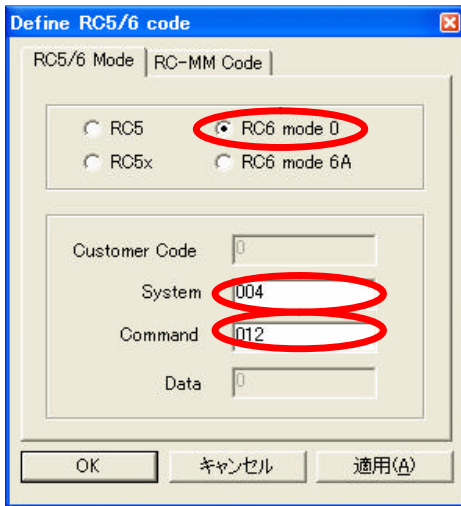
1. Open the Button properties window and push Set IR button.



2. Push the Advanced button.



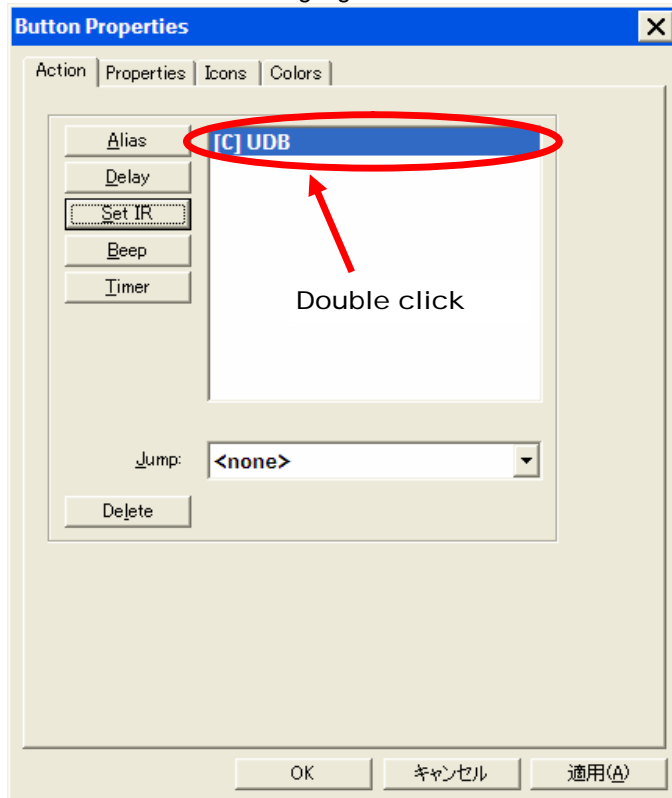
3. Select the RC6 mode 0 and Enter **DECIMAL IR code** in the IR chart. The IR code can then be set.



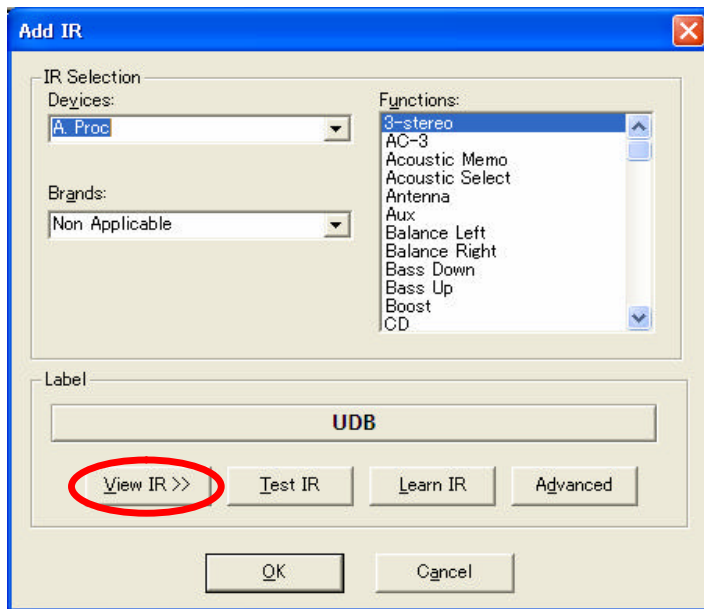
<< For RAV-2000 by using RAVedit ver 1.0.0 >>

\* NOTE : The following steps are for those who have sufficient experience using RAVedit.

1. Open the Button properties window to display the existing IR code, and double click the highlighted area to set another IR code.



2. Push the View IR button.



3. Enter Predefined code in the IR chart and push OK button. The IR code can then be set.

